

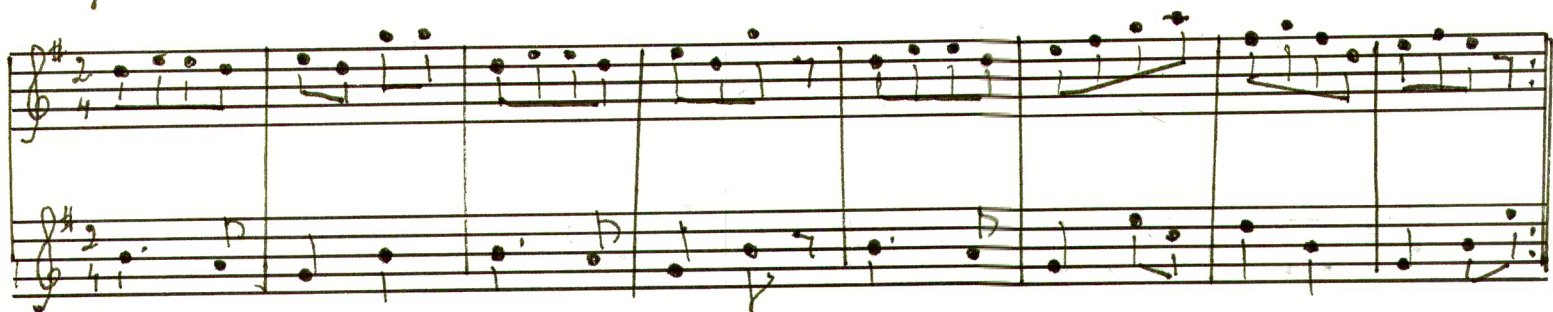
Allegro

22.

A handwritten musical score on 12 staves, organized into six systems of two staves each. The notation is in treble and bass clefs with a key signature of one flat (B-flat). The tempo is marked 'Allegro'. Measure numbers 22 through 29 are indicated at the beginning of each system. The first system (measures 22-23) shows a melodic line in the upper staff and a more rhythmic accompaniment in the lower staff. The second system (measures 24-25) contains significant portions of music that have been crossed out with diagonal lines. The third system (measures 26-27) continues the melodic and accompanimental lines. The fourth system (measures 28-29) features a melodic line with some notes marked with an 'X' and a final measure with a double bar line. The fifth system (measures 30-31) shows a continuation of the melodic and accompanimental lines. The sixth system (measures 32-33) concludes the page with a final melodic phrase and a double bar line.

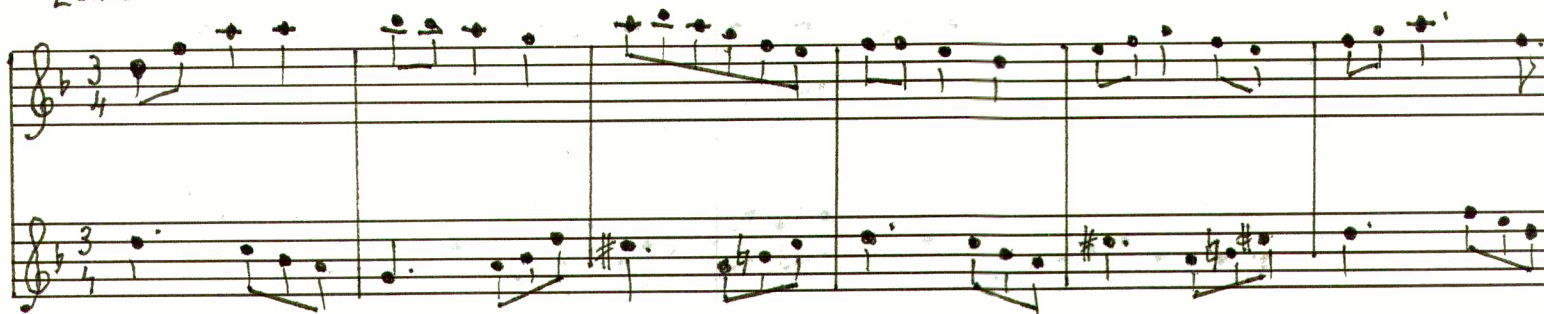
Allegro

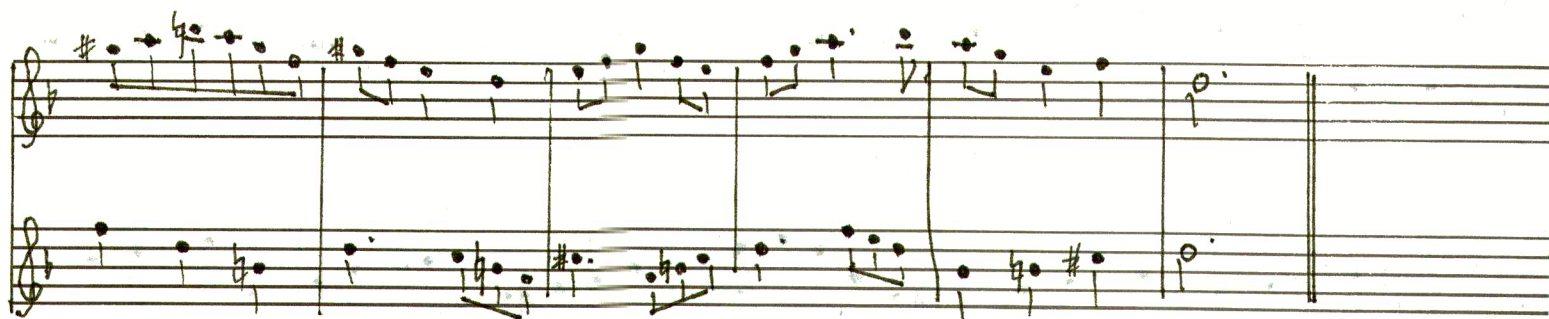
23



Lento

24





Marcha

25



Vals

Handwritten musical score for a waltz (Vals) in 3/4 time, featuring 12 staves. The score includes various musical notations such as notes, rests, and dynamic markings.

Key markings and annotations include:

- 26.** (Measure 26)
- 12.** (Measure 12)
- Fine** (Measure 12)
- D.C. al Fine senza rep.** (Measure 20)
- Allegro maestoso** (Measure 27)
- 27.** (Measure 27)
- 12.** (Measure 12)
- 12.** (Measure 12)

Handwritten musical notation for measures 1-12. The first system consists of two staves. The top staff is in treble clef with a key signature of two flats (Bb, Eb) and contains measures 1-6. The bottom staff is in bass clef with the same key signature and contains measures 1-6. A repeat sign with first and second endings is present at the end of the system. The second system also consists of two staves, continuing the melody and bass line for measures 7-12.

Moderato

28.)

Handwritten musical notation for measures 13-24. The third system consists of two staves in treble clef with a key signature of one sharp (F#) and a common time signature (C). The fourth system also consists of two staves in treble clef with the same key signature and time signature, continuing the melody and bass line for measures 13-24.

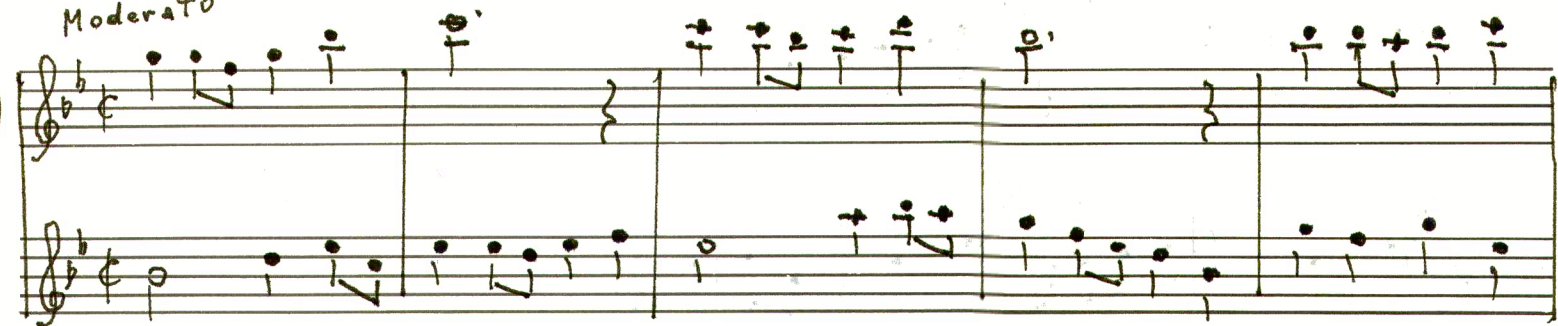
Allegretto

29.)

Handwritten musical notation for measures 25-36. The fifth system consists of two staves in treble clef with a key signature of two flats (Bb, Eb) and a 2/4 time signature. The sixth system also consists of two staves in treble clef with the same key signature and time signature, continuing the melody and bass line for measures 25-36.

Moderato

30.)



Moderato

31



32

Allegro

33

Allegro

vals

34

Handwritten musical score for a waltz, measures 34-38. The music is written on two staves per system, using a treble and bass clef. The key signature has one flat (B-flat). The time signature is 3/4. The notation includes various note values (quarter, eighth, and sixteenth notes), rests, and accidentals (sharps and flats). There are several slurs and ties across measures. Measure 34 starts with a treble staff containing a quarter note G4, a quarter note A4, and a quarter note B4, followed by a bass staff with a quarter note G3, a quarter note A3, and a quarter note B3. The piece concludes with a double bar line at the end of measure 38.

Allegro

35

Handwritten musical score for an allegro, measures 35-38. The music is written on two staves per system, using a treble and bass clef. The key signature has one flat (B-flat). The time signature is 2/4. The notation includes various note values (quarter, eighth, and sixteenth notes), rests, and accidentals (sharps and flats). There are several slurs and ties across measures. Measure 35 starts with a treble staff containing a quarter note G4, a quarter note A4, and a quarter note B4, followed by a bass staff with a quarter note G3, a quarter note A3, and a quarter note B3. The piece concludes with a double bar line at the end of measure 38.

Fine

Fine

D.C. al Fine

Allegretto moderato

36

Vals

37

Allegro

38

Handwritten musical notation for measures 27-32. The system consists of two staves. The upper staff is in treble clef with a key signature of one flat (B-flat). It contains eighth and sixteenth notes, some with slurs and ties. The lower staff is in bass clef with a key signature of one flat. It contains eighth and sixteenth notes, some with slurs and ties. Measure 32 ends with a double bar line and repeat dots.

Handwritten musical notation for measures 33-38. The system consists of two staves. The upper staff is in treble clef with a key signature of one flat. It contains eighth and sixteenth notes, some with slurs and ties. The lower staff is in bass clef with a key signature of one flat. It contains eighth and sixteenth notes, some with slurs and ties. Measure 38 ends with a double bar line and repeat dots.

Moderato

39

Handwritten musical notation for measures 39-43. The system consists of two staves. The upper staff is in treble clef with a key signature of one flat and a 2/4 time signature. It contains eighth and sixteenth notes, some with slurs and ties. The lower staff is in bass clef with a key signature of one flat and a 2/4 time signature. It contains eighth and sixteenth notes, some with slurs and ties. Measure 43 ends with a double bar line and repeat dots.

Handwritten musical notation for measures 44-49. The system consists of two staves. The upper staff is in treble clef with a key signature of one flat. It contains eighth and sixteenth notes, some with slurs and ties. The lower staff is in bass clef with a key signature of one flat. It contains eighth and sixteenth notes, some with slurs and ties. Measure 49 ends with a double bar line and repeat dots.

Allegro

40

Handwritten musical notation for measures 50-54. The system consists of two staves. The upper staff is in treble clef with a key signature of two sharps (F# and C#) and a 2/4 time signature. It contains eighth and sixteenth notes, some with slurs and ties. The lower staff is in bass clef with a key signature of two sharps and a 2/4 time signature. It contains eighth and sixteenth notes, some with slurs and ties. Measure 54 ends with a double bar line and repeat dots.

Handwritten musical notation for measures 55-60. The system consists of two staves. The upper staff is in treble clef with a key signature of two sharps. It contains eighth and sixteenth notes, some with slurs and ties. The lower staff is in bass clef with a key signature of two sharps. It contains eighth and sixteenth notes, some with slurs and ties. Measure 60 ends with a double bar line and repeat dots.

Allegro

Handwritten musical score for two staves, measures 1-10. The key signature is one flat (B-flat) and the time signature is 2/4. The notation includes various note values (quarter, eighth, sixteenth notes), rests, and accidentals (sharps, flats, naturals). The first staff begins with a treble clef and a key signature of one flat. The second staff begins with a bass clef and a key signature of one flat. The notation is handwritten and includes some corrections and markings.

Eight sets of empty musical staves, each consisting of two staves (treble and bass clef), for measures 11-18. The staves are blank, with only the red lines and clefs visible.

